

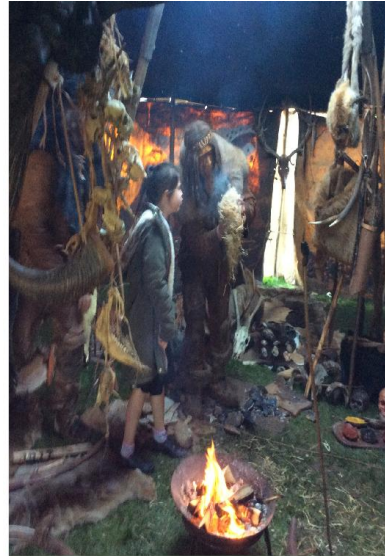


Newsletter 20<sup>th</sup> January 2017

## ALPINGTON & BERGH APTON Church of England VA Primary School

Dear All

Parents of children in KS2 will have heard we had a visit this week from two cavemen who set up camp in our school field! What a fantastic learning experience they had. Some of the children's comments are below.



On Tuesday we had a strange but amazing experience. Some real life people from the Stone Age were found living on our school field. We went over to them and they gave us a tour of their cave. They told us some stories and bunch of facts. It was an awesome morning!

On Tuesday 17<sup>th</sup> January 2017 we had an amazing surprise! This term our topic is the Stone Age to the Iron Age and our teachers had planned for us to meet two Stone Age men. They



talked about the Stone Age in an amazing cave which was covered in cave paintings and animal fur. It was great fun!

Their clothes were made out of animal skin and they showed us how to make fire. Then we gutted and cooked some fish which we were then able to eat.

It was an amazing experience for us all and the men were really interesting.

It was the best day ever!

### Dates for this half-term:

Thurs. 26<sup>th</sup> Tom and Trolls  
Storytelling for KS2 children  
Tues. 7<sup>th</sup> Feb., Year 5 trip to  
Hobart "We Will Rock You"  
Tues. 7<sup>th</sup> Feb. 9.30am, C2  
dress rehearsal  
Wed. 8<sup>th</sup> and Thurs. 9<sup>th</sup> 2pm  
C2 performances  
Wed. 8<sup>th</sup> Feb. KS2 trip to Time  
and Tide Museum  
Thurs. 9<sup>th</sup> Feb. Friends cake  
sale after school  
Fri. 10<sup>th</sup> Feb., break up for half-  
term  
Mon. 20<sup>th</sup> Feb. return to school

### Contact Details:

Alington CE VA Primary School,  
Wheel Road, Alington, Norwich  
NR14 7NH

Tel. 01508 492700

Web:

[www.alington.norfolk.sch.uk](http://www.alington.norfolk.sch.uk)

E-mail:

[office@alington.norfolk.sch.uk](mailto:office@alington.norfolk.sch.uk)



Please pop into school to see the photographs on the display board in the corridor or visit our website. The event was paid for from "Friends" funds, i.e. money raised by events organized by Friends and which you as parents have taken part/contributed ... thank you.

**Wednesday 8<sup>th</sup> February** all the KS2 children will be visiting the Time and Tide Museum where they will take part in activities relating to their Stone Age topic.

**School Census** – All schools have been asked by the DfE to report the nationality and country of birth of children in school this week. We apologise if this appears to be intrusive but obviously we need to comply with DfE requests for this kind of information via the school census.

### **Parent Questionnaire**

Please find attached our annual parent questionnaire. There may be comments you wish to make or subjects you may wish to raise that are not covered by the questionnaire so please use the space to add any additional comments. These are often the most useful to us as we consider our school development priorities.

**Class 2 performance – "Eddie and the Penguins Save the World"**. Performances: Tues. 7<sup>th</sup> Feb. at 9.30am dress rehearsal and toddlers invited, Wed. and Thurs. 8<sup>th</sup> and 9<sup>th</sup> Feb. 2pm performances for parents. A sign-up sheet will be posted outside Class 2 nearer the time. Please sign-up so we can have an idea for seating arrangements.

**Class 2 Parents are invited to join us for lunch on Tuesday 31<sup>st</sup> January.** You will see there is a booking form attached, the price is £2.30 + VAT = £2.76. Please return your slip by Tuesday 24<sup>th</sup> January.

**Thank you for celebrating Christingle with us.** Together, we raised a fantastic £146.68 to help support vulnerable children and young people in this country who are facing hardship, abuse and neglect.

### **School Sports**

We wish Estelle W and Harry D good luck when they take part in the South Norfolk Schools Partnership Swimming Gala on Tuesday 24<sup>th</sup> at the UEA. Harry has also qualified to take part in the Norfolk School Games Cross Country Competition at Gresham's School on 10<sup>th</sup> Feb. Hope you're training Harry!!

**Tom and The Trolls** storytelling will take place on Thurs. 26<sup>th</sup> Jan. for those children in KS2.

*"Tom and the Trolls tackles the issues raised by bullying from the child's level and employs the dynamic qualities of storytelling to emphasise that bullying can be verbal or social – harsh words can harm you and identify and explore the effectiveness of strategies a victim employs to overcome bullying."*

Our team of Year 5 and Year 6 children are also visiting the UEA, this time on 31<sup>st</sup> Jan. They have qualified to represent the school in the SNSP Sportshall athletics, again good luck.

Once the children are in KS2 they have several opportunities to take part in sporting activities outside of school hours and this often involves asking parents to help transport children to and from events; we have basketball competitions this term. We are grateful to those parents who are able to help accompany and support the children.

**"We Will Rock You"** is being performed by the pupils at Hobart High School and the Year 5 children have been invited to their dress rehearsal on Tuesday 7<sup>th</sup> February. Transport has been arranged, the children will have an early school lunch and will be back by 3pm.

**Friends Cake Sale** ... after school on Thursday 9<sup>th</sup> February on the theme of Valentine. Please bring cakes into school in the morning – thank you.

**Great Ormond Street fundraising** – Mrs Farrow has requested we support her fundraising for this very good cause. On Friday 10<sup>th</sup> Feb. the children and staff are invited to come into school with wacky hairstyles as crazy or as subtle as they like, bringing in a donation of £1 per person. I am sure you will agree that GOSH does a very good job and as George has benefitted from their expertise it would be good to give something back. However, children will be expected to have their hair back to its usual style and colour by the Monday!!

**Thank you** – for responding to our request to allow your children to be more independent when coming into the classrooms. We have noticed a difference in the classrooms in the mornings which means we are able to get down to work more quickly. Parents are of course always welcome into school, but try to let your child hang up his/her own coat and sort out where to put lunchboxes and water bottles whenever possible and appropriate.

### **Emergency closure**

Last week we emailed and sent home a letter regarding school emergency closure, a copy of that letter is attached.

As you can see yet another busy half-term; albeit a short one. The younger children have a trip next half-term to look forward to, details to follow.

Teresa Osborne

### **Attachments:**

- School emergency closure letter
- Parent Questionnaire
- Invitation to Class 2 Parents to join us for lunch – Tues 31<sup>st</sup> January
- KS2 letter regarding trip to Time and Tide on 8<sup>th</sup> February
- ProCoach 2 Day Football Course – 13<sup>th</sup> and 14<sup>th</sup> Feb. booking form
- “How food smart are you?” pack